

# ILLINOIS LAW REQUIRES IPM IN CHILDCARE FACILITIES

A FACTSHEET FROM SAFER PEST CONTROL PROJECT



**A**ll licensed childcare facilities in Illinois are required by law (Public Act 93-0381) to use Integrated Pest Management (IPM) – a safer method of pest control. The law protects children and childcare providers from unnecessary exposure to pesticides – making your facility safer for you and the children in your care.

## What is IPM?

IPM is a simple, common-sense approach to pest control that eliminates the root cause of pest problems. By minimizing pests' access to food, water, and shelter and eliminating pests' access to the inside of buildings – most pest problems can be controlled without dangerous pesticides. Persistent pest problems are handled in the least hazardous way, reducing pesticide exposure.

## Not Another Law?!

You don't need a law to remind you to keep kids safe. But did you know kids have a special vulnerability to pesticides? IPM reduces children's exposure to pesticides, avoiding potential health problems such as cancer and developmental and neurological disabilities in the future. Additional benefits of IPM include fewer 'pest emergencies', reduced clutter and increased energy efficiency at your facility. Childcare facilities across the state have successfully used IPM for years – you can do it too!

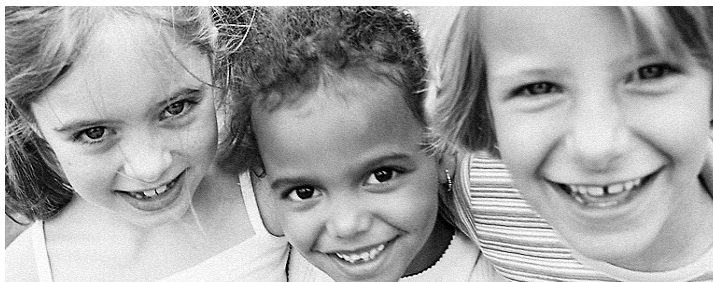
## What Does the New Law Require?

- Adopt an IPM program following the guidelines of the Illinois Department of Public Health (IDPH) (see 'Resources for IPM' at right).
- Appoint a childcare employee to oversee pest management operations and record keeping.
- Establish notification procedures to notify parents of plans to apply pesticides between two and thirty days before application.
- Notify IDPH in writing if your facility cannot adopt an IPM program because it is not economically feasible.
- Never apply pesticides when children are present.
- Remove toys and items mouthed or handled by children prior to pesticide application.
- Keep children out of the treated areas for at least two hours after pesticide application or as specified on the product label.
- Stop routine pesticide spraying; pesticides are used only as a last resort and least-toxic options are always utilized.

## What You Need to Know to Use IPM

A good IPM program utilizes (but is not limited to) the following tactics:

- Regular pest population monitoring: keep a record of pest sightings
- Improved sanitation
- Site inspections (pest control companies that use IPM normally include this with their services)
- Staff education on trash and food management
- Improved maintenance: sealing and caulking holes
- Communication and cooperation with your pest control company



## Resources for Childcare IPM

Safer Pest Control Project can train your staff to use IPM, assist with the development of your IPM policy, assess your site for pest problems and guide you in managing your pest control professional or locating a professional who practices IPM. Training sessions occur regularly and are often free of charge. Individualized assistance is available at your request, on a sliding-fee scale.

IDPH offers two manuals for IPM in childcare facilities - utilizing the same guidelines developed for schools:

***"Integrated Management of Structural Pests in Schools"*** (1994), a step by step guide for creating an IPM program; and

***"A Practical Guide to Management of Common Pests in Schools"*** (1999), a technical guide outlining control of common pests.

Go to [www.idph.state.il.us](http://www.idph.state.il.us); click on "A to Z" topics (left side of page), select "P" and scroll down to the "Pests" topics to find the manuals.

**Safer Pest Control Project is dedicated to reducing the health and environmental impacts of pesticides and promoting safer alternatives in Illinois.**

25 E. Washington Suite 1515, Chicago, Illinois 60602 Tel: 312/641-5575 Fax: 312/641-5454 Web: [www.spcpweb.org](http://www.spcpweb.org)